

# SPEC SHEET + MEASUREMENTS

PORT AUTHORITY.

Port Authority® Arc Sweater Fleece Jacket. F428

## Product photo



With a subtle heathered pattern, our Arc Sweater Fleece combines the comfort of a sweater with the unbeatable warmth of fleece. Works well on its own or as a multi-seasonal layer.

- 8.6-ounce, 100% polyester sweater fleece
- Anti-pill finish
- Molded center front zipper
- Reverse coil zippered hand pockets

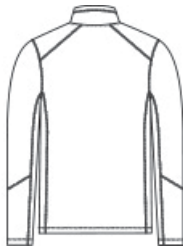
### CARE INSTRUCTIONS

Machine Wash Cold Gentle Cycle With Like Colors. Only Non-Chlorine Bleach When Needed. Tumble Dry Low. Cool Iron If Necessary.

## Sketches



front



back

# SPEC SHEET + MEASUREMENTS

PORT AUTHORITY

Port Authority® Arc Sweater Fleece Jacket. F428

## PRODUCT MEASUREMENTS

	XS	S	M	L	XL	2XL	3XL	4XL
Body Length at Back	26	27	28	29	30	31	31 1/2	32
Chest	19	20 1/2	22	23 1/2	25	26 1/2	28 1/2	30 1/2
Sleeve Length from Center Back	34 1/4	35	35 3/4	36 1/2	37 1/4	38	38 3/4	39 1/2

**Body Length at Back:** Measured from high point shoulder to finished hem at back.

**Chest:** Measured across the chest one inch below armhole when laid flat.

**Sleeve Length from Center Back:** Measure from Center Back neck to shoulder point to sleeve hem.

## SIZE CHARTS

	XS	S	M	L	XL	2XL	3XL	4XL
Chest	32-34	35-37	38-40	41-43	44-46	47-49	50-53	54-57

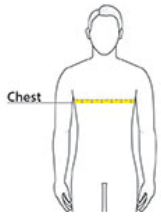
# SPEC SHEET + MEASUREMENTS

PORT AUTHORITY.

Port Authority® Arc Sweater Fleece Jacket. F428

## HOW TO MEASURE

---



### CHEST

Measure under the arm and around the fullest part of the chest with arms down, keeping tape horizontal.

## COLORS

---



Deep Black  
PMS BLACK  
C



Deep Smoke  
Heather

DesertSndH



Grey Smoke  
Heather



Insignia Blue  
Heather  
PMS 7687C